

savvius Insight™

Savvius Insight: Remote Network Visibility

Savvius Insight is a compact, quad-core, six-port, mini network appliance that has no fan or other moving parts, and fits easily into a wiring closet. It includes bridge ports for monitoring the location's Internet connection, and three additional ports for monitoring internal networks. Works with network speeds of up to 850 Mbps.

Savvius Insight provides built-in long-term reporting and web-based dashboards for analyzing and displaying network statistics over long periods. Savvius Insight can also be used for packet level network and application troubleshooting by connecting directly to it with Savvius OmnipEEK. By installing Savvius Insight in each remote location, network administrators can easily and affordably gain insight into the performance and security of the network and applications at all locations under management. Savvius Insight makes enterprise-class network analytics available in areas that have been under-served until now.

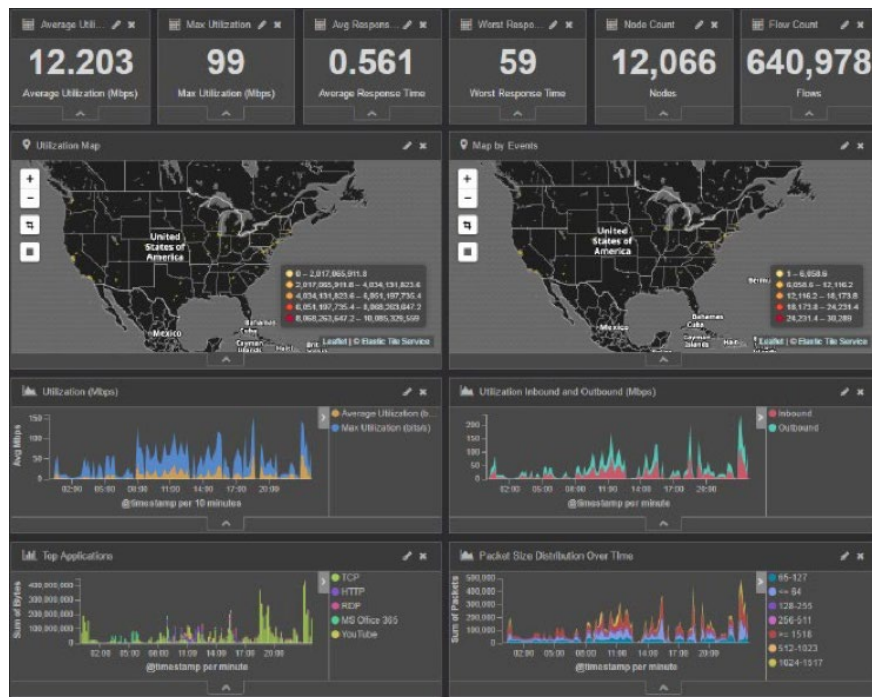


SAVVIUS INSIGHT (177 x 44 x 145.5 mm)

Using Insight

Long-Term Reporting with ELK

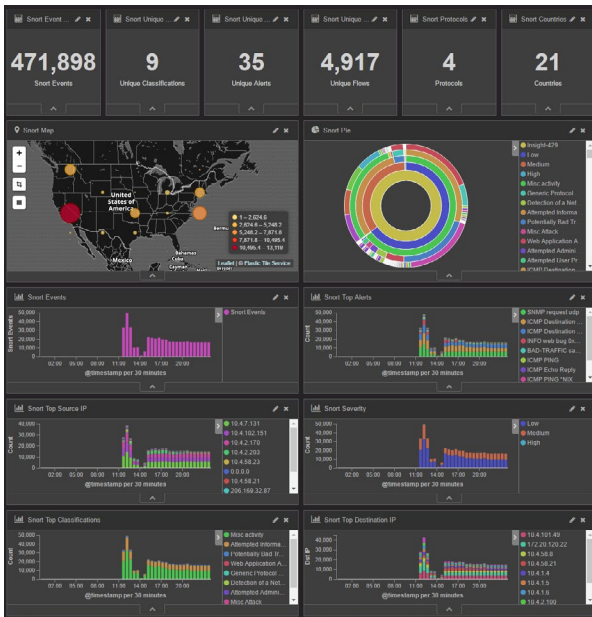
When you connect Savvius Insight to your network it immediately begins collecting network statistics for long-term reporting and trending. Searching for and analyzing data is extremely easy using the many built-in dashboards. Use these dashboards to analyze your data intelligently, perform mathematical transformations, and slice and dice your data as you see fit.



Because ELK is the technology behind the integrated long-term reporting capability included with Savvius Insight, it can be configured to send its data directly to a remote ELK server. This allows for long-term reporting and centralized aggregation of data from multiple Savvius Insight appliances to monitor all of your remote locations from a single dashboard.

Security Events

Savvius Insight can be extended for security purposes as well. Since Savvius Insight already has ELK on it, and is typically connected inline to the network, it makes sense to utilize Savvius Insight for security purposes. One type of data perfect for displaying in Kibana, and even correlating with the Savvius analysis, is IDS events. And the most popular IDS out there is Snort, and its open source. Snort can be installed directly onto Savvius Insight. Once installed, you can create and customize ELK dashboards to display Snort events and more.



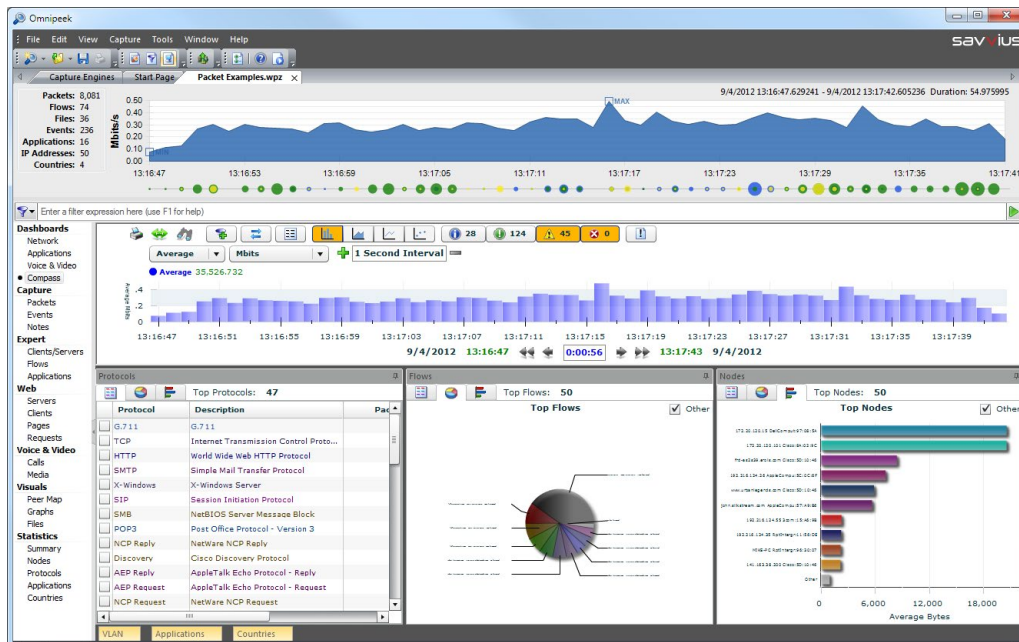
Mobile Monitoring

Savvius Insight with built in ELK dashboards gives you the ability to monitor your network from virtually anywhere. You may often find yourself away from your desk, but need to be able to monitor the health of your network. With Insight and ELK, you can customize your dashboards so you can monitor right from your phone, giving you the ability to notify someone on scene to take a look at something that doesn't seem right.



Troubleshooting with OmnipEEK for Savvius Insight

A version of Savvius OmnipEEK software called OmnipEEK for Savvius Insight is available for download for users of Savvius Insight. You can use OmnipEEK for Savvius Insight to start packet captures, and to analyze packet files that are captured and saved on Savvius Insight. OmnipEEK for Savvius Insight is installed on a Windows computer that has network access to the Savvius Insight appliance.



Here are some of the strategic ways to get started with Omnipeek for Savvius Insight:

- **Start a Capture:** Capture and analyze network packet data in real-time, and record data for post-capture analysis from one or more Savvius Insight appliances installed on the network. You can view a capture in real-time, or save it to disk for later analysis.
- **View Network Details:** The Compass dashboard is an interactive forensics tool that displays network use over time, including statistics for protocols, nodes, flows, VLANs, and applications. You can review a single supported capture file, or multiple capture files aggregated within the Compass workspace.
- **View the Experts:** The Expert views provide expert analysis of response time, throughput, and network applications in a flow-centered view of captured traffic. Expert views also provide details of every transaction, noting any problems encountered in individual conversations or flows. You can drill down in Expert views to select the packets associated with a particular event or with any conversation.
- **View the Packets:** Access to packets, the units of data carried on the network, is the basis for all root-cause analysis. When troubleshooting network problems, you need to be able to drill down into the packets themselves to look at their individual decodes, and to use the packets captured into the buffer as the foundation for expert and statistical analysis.

Conclusion

To keep remote networks operating smoothly and securely, IT teams need best-in-class solutions for monitoring, analyzing, and troubleshooting remote networks.

Savvius Insight, featuring web-based long-term reporting using ELK technology, award-winning Savvius Omnippeek network analysis software, and best-in-class network recording and forensics tools, provides a powerful, economical network visibility and management solution for remote locations at the network edge.

Whether you need a solution for a single remote office or hundreds of remote locations, you can trust Savvius Insight to provide the network visibility and analytical insights you need to keep networks and applications performing at their best.

Learn more about Savvius Insight

Email sales@savvius.com or call +1 (925) 937-3200. Or visit us online at: https://www.savvius.com/products/network_monitoring/savvius_insight

Savvius and the Savvius logo are trademarks or registered trademarks of Savvius and/or its affiliates in the U.S. and other countries. All registered and unregistered trademarks are the sole property of their respective owners. The use of the word partner does not imply a partnership relationship between Savvius and any other company.